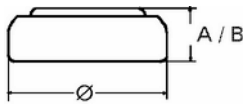


Data Sheet

Type Number 20394 SR 45
Silver Oxide / Zinc /
Designation IEC
 NaOH - Electrolyte
System



Nominal Voltage 1.55 V
 56 mAh
Typical Capacity C
 Load 13 kOhm, at 20°C down to 1.2 V
Weight (approx.) 1.04 g
 0.27 cm
Volume Date of Manufacturing
Coding Month/Year

Temperature Ranges
 Storage min max.
 Discharge -10°C 65°C

Dimensions
 Diameter (Ø) min max.
 Height (A/B) 3,5 3,6

Segment
 Watch
 Watch

Main Applications
 Photo
 Electronic

Typical Capacities (at 20°C)

Discharge Type	Load	End Voltage: 1.2 V
Continuous	13000 Ω	Time: 500 h
24h/d, 7d/w		Capacity [mAh]: 56
Current [µA]:	120	Energy [mWh]: 80