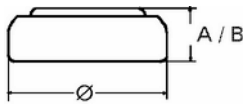


## Data Sheet

**Type Number** ..... 20397  
**Designation IEC** ..... SR 59  
 Silver oxide / Zinc /  
**System** ..... NaOH - Electrolyte



**Nominal Voltage** ..... 1,55 V  
 23 mAh  
**Typical Capacity C** .....  
 Load 20 kOhm, at 20°C down to 1.2 V  
**Weight (approx.)** ..... 0,5 g  
**Volume** ..... 0,16 cm<sup>3</sup>  
**Coding** ..... Date of Manufacturing  
 Month/Year  
**Temperature Ranges**  
 Storage .....  
 Discharge .....  
**Dimensions**  
 Diameter (Ø) ..... min max.  
 -10°C 65°C  
 Height (A/B) ..... -10°C 65°C  
**Segment**  
**Main Applications** ..... min max.  
 7,55 7,9  
 2,3 2,6

Watch

Watch

 Photo  
 Electronic

**Typical Capacities (at 20°C)**

Discharge Type	Load	End Voltage: 1.2 V
Continuous	20000 Ω	Time: 320 h
24h/d, 7d/w		Capacity [mAh]: 23
Current [µA]:	78	Energy [mWh]: 33