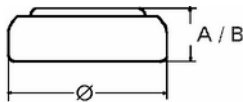


Data Sheet

Type Number 20399
Designation IEC SR 57
System Silver oxide / Zinc /
 KOH - Electrolyte



Nominal Voltage 1,55 V

Typical Capacity C 42 mAh
 Load 13 kOhm, at 20°C down to 1.2 V

Weight (approx.) 0,75 g

Volume 0,17 ccm

Coding Date of Manufacturing
 Month / Year

Temperature Ranges	min	max.
Storage	-10°C	65°C
Discharge	-10°C	65°C

Dimensions	min	max.
Diameter (Ø)	9,15	9,5
Height (A/B)	2,4	2,7

Segment Watch / High Drain

Main Applications Watch
 Photo
 Electronic

Typical Capacities (at 20°C)

Discharge Type	Load	End Voltage: 1.2 V
Continuous	13000 Ω	Time: 375 h
24h/d, 7d/w		Capacity [mAh]: 42
Current [µA]:	120	Energy [mWh]: 67